

# ASCENT

A PUBLICATION OF THE COLBY COLLEGE OFFICE OF GIFT PLANNING

## Colby Legacy Society Spotlight

### Jane Moss

#### Generational Ties Go Back Nearly 100 Years

"Some of my earliest memories as a child involve Colby," shared Jane Moss, former faculty member at Colby College. With family history and connections that go back to the 1930s, Richard (Pete) and Jane Moss are proud to support Colby by naming the College as a beneficiary of a family trust.

Jane and Pete both spent nearly three decades teaching at Colby, raising their son, David Moss, in the Waterville, Maine area. Pete served as a professor of history for 27 years, retiring as the John J. and Cornelia V. Gibson Professor of History, and Jane retired after 30 years as the Robert E. Diamond Professor of French and Women's Studies. Jane's mother, Doris Rose Hopengarten '40, and brother, Fred Hopengarten '67, attended Colby, as did other relatives: Phyllis Rose Baskin '39, Michael Baskin '70, and Annie Hopengarten Mooreville '06.

Most recently the Moss family donated the Edmonia Lewis portrait bust *Arrow Maker* to the Colby College Museum of Art. This sculpture was in their family for several generations and is considered a "lost Lewis." Many museums were interested in the work, but the Moss family wanted the Colby Museum to have it due to their strong connection to the College and the Waterville community.

"*Arrow Maker* is a piece I know the Colby College Museum of Art will cherish and value, and it will be fun to visit when we are in town," Jane said. "We admired what the Colby alumni and community have done and wanted to be a part of that." The Mosses hope their creative gifts—a gift through their trust and the gift of artwork—will inspire others to similarly contribute.

"A gift like this is very simple to do and can have a huge impact!" Jane added. And it doesn't end there, as the Moss family is in the process of considering other ways to support Colby through their estate and financial plans.



Jane Moss with Edmonia Lewis's *Arrow Maker*

To learn more about the benefits of including Colby in your estate plans, how to do so, and how such a gift can accomplish both your financial and philanthropic goals, contact Colby's Office of Gift Planning.

Colby | DARE  
NORTH  
WARD





## From the Director

Dear friends,

I'm wondering—when was the last time you visited campus?

When I meet with alumni and friends, some folks tell me that they have never missed a reunion, while others can't think of the last time they stopped by. Of course, life gets busy.

As we've begun to welcome visitors back to campus in the last year for reunion, the Colby College Museum of Art's Summer Luncheon, Homecoming Weekend, and athletics games, faculty and staff can feel the love and enthusiasm that Colby supporters have for Mayflower Hill, particularly when gathered together in celebration (or in opposition of our NESCAC peers).

Whether you are a regular visitor or haven't been back since graduation, there's plenty to see. The museum's stunning exhibit *Painted: Our Bodies, Hearts, and Village* elevates Pueblo perspectives in the Southwest. The Gordon Center for Creative and Performing Arts opened this September, which I'm extra excited about as a member of the Colby Wind Ensemble. And, of course, downtown Waterville is transforming with new restaurants, the Paul J. Schupf Art Center, and more!

As our friend Dick Schmaltz '62 is fond of saying, "Come back—taste the water!"

When you plan your visit to campus, feel free to reach out to me directly for a tour, lunch in Waterville, or even just recommendations of restaurants we locals like.

Yours in gratitude,

Valerie Sherman, JD, CFP®  
Director of Major and Planned Giving



## We're here to help.

Contact us at 1-800-809-0103 or [giftplanning@colby.edu](mailto:giftplanning@colby.edu). You can also find us online at [giftplanning.colby.edu](http://giftplanning.colby.edu).

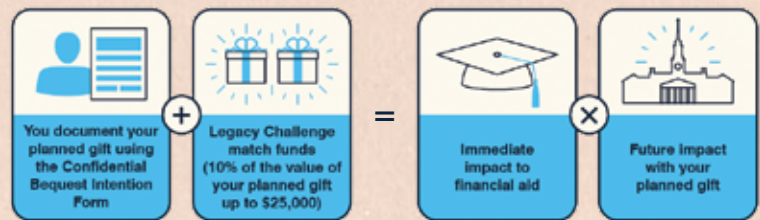
# Leave Your Mark Legacy Challenge

Beginning last year, individuals who will be 60 or older by the end of the Dare Northward Campaign and document a new future gift for Colby College (such as a bequest intention or life income gift) will have 10 percent of their gift's value matched with an immediate, outright gift (up to \$25,000) to financial aid from anonymous donors. The anonymous donors pledged \$1 million to support financial aid at Colby and wanted their gift to inspire others.

The gift match means you will support Colby in the years to come through your planned gift, and you will help build vital financial aid resources today in partnership with other Colby supporters.

To date, Leave Your Mark has celebrated over 55 new planned gifts and has unlocked over \$720,000 in current gifts to financial aid from our matching donors. Please join us!

## How It Works



## In Memoriam

Colby College acknowledges alumni and friends who have recently passed away, leaving thoughtful bequests to the College:

- Dorothy "Dorrie" Bean
- Georgia "Betsy" Fisher Kearney Caldwell '52
- Barbara Carter
- William R. Cotter LL.D.'00
- Judith de Luce, Ph.D. '68
- William C. Decas '68
- Karl Dornish '54
- C. Arthur Eddy '54
- Sandra J. Fullerton '62
- Eugenie "Jean" Hahlbohm Hampton '55
- George M. Haselton '51
- Susan Lynch Henry '48

- Janis Hillery Hirsch '64
- June Ingraham
- Carlton D. Leaf '52
- Evelyn H. Malkin '48
- William T. Mason, Jr. '47
- Marguerite Di Giacomo Sarno '48
- Parker Symmes P'81
- Robert M. Tonge, Sr. '49
- Marilyn Brooks Wey '56
- Lucia W. Whittlesey '73
- Laurie B. Williams

Bequest gifts from alumni, families, and friends enable future generations of students to thrive at Colby.

# Colby College Museum of Art: Exhibition Highlights

With a vibrant multisite presence on campus and in downtown Waterville, the museum opens access to art and artists, creating a forum for experimentation, research, and dialogue that brings a diversity of people together to explore the complexity of American identities, expressions, and experiences. Established in 1959, the museum has evolved into a dynamic space that not only showcases a diverse range of art but also fosters creativity and intellectual exploration. The museum has been a significant contributor to Waterville's burgeoning arts scene and is an essential destination for art enthusiasts and scholars alike. Guests are welcome to explore the current exhibitions, some of which have garnered national attention.

Opening to rave reviews in May was *Painted: Our Bodies, Hearts, and Village*, a collection installation drawn largely from the Lunder Collection and its great strengths of art in the southwest United States. The exhibition puts in dialogue works from the Taos Society of Artists (TSA) with works by 20th and 21st century Native American artists, centering Pueblo perspectives on the context that informed the social and cultural landscape of Taos from 1915 to 1927, and shedding light on issues that affect Native people today, in the Southwest and beyond. The exhibition occasioned new research through the Lunder Institute for American Art, new acquisitions—including a commission—thanks to generous endowment support and art purchase funds, and the opportunity for Colby alumni to lend works from their



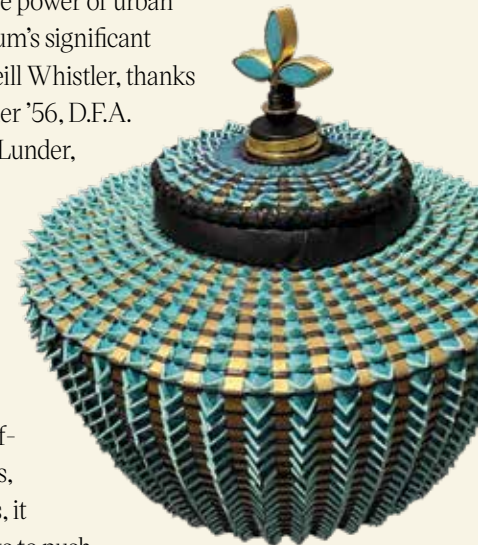
View of *Painted: Our Bodies, Hearts, and Village*.



own collections to contribute to the narrative, opening new paths in American art history.

Other exhibitions featuring the museum's world-class collection are *Come Closer: Selections from the Collection, 1978-1994*, which beckons viewers to engage with thoughtfully selected artworks from different eras and the urgent current events and social issues the works reflect, and *Constellations: Forming the Collection, 1973-2023*, which illuminates the fascinating stories behind the museum's acquisitions, showcasing its commitment to preserving and displaying artistic treasures. *Alex Katz: Repetitions* immerses visitors in the artist's distinctive style and his exploration of repetition and variation showcasing some of the museum's more than 900 works by Alex Katz. *Whistler: Streetscapes, Urban Change* pays homage to the transformative power of urban landscapes, celebrating the museum's significant holdings of works by James McNeill Whistler, thanks to the generosity of Peter H. Lunder '56, D.F.A. '98 and Life Trustee Paula Crane Lunder, D.F.A. '98.

There's more to be seen in downtown Waterville, where the Paul J. Schupf Art Center stands as a dynamic addition to Waterville's cultural landscape. Equipped with state-of-the-art facilities, including studios, galleries, and collaborative spaces, it empowers local and visiting artists to push the boundaries of their craft, and visitors are able to enjoy art in a variety of media. Visitors can take a mesmerizing journey through time and memory via the art of film through *Bill Morrison: Cycles and Loops*, on view in the Joan Dignam Schmaltz Gallery. Together, the Colby College Museum of Art and the Paul J. Schupf Art Center stand as pillars of creativity and cultural enrichment in the city. They offer a profound invitation to explore, engage, and immerse oneself in the world of art, contributing to the growth of Waterville's vibrant creative economy.



Above right, Sarah Sockbeson, *Untitled Basket*, 2023. Aluminum house siding, found vinyl, enamel spray paint, faux leather. Museum purchase from the Jere Abbott Acquisitions Fund; 2023.046

# Planned Giving with Donor-Advised Funds

Charitable gifts can be a tax-efficient way to support nonprofits. However, the efficiency wanes when there is outsized overhead to establish and maintain a plan that takes the joy and flexibility out of giving. A way to maintain that warm glow and apply a tax-efficient strategy is a donor advised fund, or DAF. A DAF is maintained by a public charity and allows donors to establish a dedicated account of their tax-deductible donations and invest those funds for growth.

It's key to note that the donor gives up legal control over the donation once made to the DAF, although the donor retains an advisory role over the donated assets.

Sponsoring organizations generally have an easily operable online portal and a team of professionals to support you through funding the DAF, aligning investment options to your goals, and recommending grants to your favorite charities. The donor's tax preparation burden



**Alison E. McArdle '07**  
Senior Vice President  
Digital Asset Client  
Experience & Solutions  
BNY Mellon

is typically minimized because the only receipts for tax purposes that the donor must maintain are those to the sponsoring organization, reducing the year-end scramble to gather receipts from various charities.

The main benefit of a DAF is that it's a ready reserve of assets that enables donors to dedicate more to charitable giving in banner financial years and maintain giving in the leaner income years, including sustaining gifts in retirement and estate planning.

If you are intrigued by what a DAF might be able to do for your giving plans, start with research into national DAF sponsors or community foundations. Colby's planned giving team can share their experiences, and, as always, discuss with your financial, legal, and/or tax advisor to determine if a DAF is right for your situation and goals.

*Alison was formerly a Director of Compliance of Fidelity Charitable, a DAF-sponsor, and earned her law degree from Suffolk University Law School in 2015.*



**Valerie Sherman, JD CFP®**  
Director of Major and Planned Giving  
Colby College  
4370 Mayflower Hill  
Waterville, ME 04901  
[giftplanning@colby.edu](mailto:giftplanning@colby.edu)



## Campus Calendar

- Oct. 11** Colby Legacy Society virtual event: An Insider Look with Colby's Admissions Tour Guides
- Oct. 16–22** National Estate Planning Awareness Week
- Oct. 17** Colby Legacy Society virtual event: A Conversation with Vice President and Harold Alfond Director of Athletics Mike Wisecup
- Oct. 20–22** Homecoming Weekend
- Nov. 3–4** *Painted: Our Bodies, Hearts, and Village* Symposium
- Dec. 2** Winter Sports Celebration and Colby-Bowdoin men's ice hockey game
- Dec. 8** Last day of classes
- Jan. 9–Feb. 1** Jan Plan

**To see more Colby events, go to [events.colby.edu](https://events.colby.edu)**